



 Rivestimento  
 Wall tile  
 Pavimento  
 Floor tile

Pasta Bianca  
 White Body  
 Porcellanato  
 Porcelain

# Rhombus

14x24 cm. 15x26 cm.  
 6" x 10" 6 1/2" x 11"



1. Rhombus White / Dark Grey / Black | 2. Rhombus White / Dark Grey / Black | 3. Rhombus Wall Light Grey / Dark Grey / deco Bambú Grey

# Rhombus



2



# Random Reliefs



**White** 14x24  
21294 COD. 40



**Cream** 14x24  
21291 COD. 40



**Taupe** 14x24  
21292 COD. 40



**Light Grey** 14x24  
21290 COD. 40



**Dark Grey** 14x24  
21293 COD. 40



**Black** 14x24  
21295 COD. 40



**Green** 14x24  
21311 COD. 40



**Violet** 14x24  
21313 COD. 40



**Red** 14x24  
21312 COD. 40

Random reliefs



<0,5% B<sub>l</sub>



>1300 N



7



3



5



≈ 2 mm

| FORMATO / SIZE       | Kg/pza |     | Kg             |      | pzs            |         | Kg |    | cajas |
|----------------------|--------|-----|----------------|------|----------------|---------|----|----|-------|
|                      |        | pzs | m <sup>2</sup> |      | m <sup>2</sup> |         |    |    |       |
| 14 x 24 cm. 6" x 10" | 0,320  | 60  | 19,20          | 1,00 | 3.360          | 1.075,2 | 56 | 56 |       |

# Rhombus



3



# Smooth = Liscio



**White Smooth** 14x24  
22688 COD. 40



**Light Grey Smooth** 14x24  
22691 COD. 40



**Dark Grey Smooth** 14x24  
22692 COD. 40



**Black Smooth** 14x24  
22693 COD. 40



**Cream Smooth** 14x24  
22689 COD. 40



**Taupe Smooth** 14x24  
22690 COD. 40



Rhombus White Smooth / Dark Grey Smooth



| FORMATO / SIZE       | Kg/pza | pzs | Kg    | m <sup>2</sup> | pzs   | Kg      | m <sup>2</sup> | cajas |
|----------------------|--------|-----|-------|----------------|-------|---------|----------------|-------|
| 14 x 24 cm. 6" x 10" | 0,320  | 60  | 19,20 | 1,00           | 3.360 | 1.075,2 | 56             | 56    |

# Rhombus

# Wall = Rivestimento



4



**Wall**  
**White** 15,2x26,3  
22747 COD. 40



**Wall Light**  
**Grey** 15,2x26,3  
22750 COD. 40



**Wall Dark**  
**Grey** 15,2x26,3  
22751 COD. 40



**Wall**  
**Black** 15,2x26,3  
22748 COD. 40



**Wall**  
**Cream** 15,2x26,3  
22749 COD. 40



**Wall Mist**  
**Green** 15,2x26,3  
22753 COD. 40



**Wall Ash**  
**Blue** 15,2x26,3  
22752 COD. 40

## Decorato / Decors



**Bambú**  
**B&W** 15,2x26,3  
22755 COD. 46



**Bambú**  
**Grey** 15,2x26,3  
22756 COD. 46



**Bambú**  
**Cream** 15,2x26,3  
22754 COD. 46



**Bambú Ash**  
**Blue** 15,2x26,3  
22757 COD. 46



**Bambú Mist**  
**Green** 15,2x26,3  
22758 COD. 46



**Pattern**  
**B&W** 15,2x26,3  
22760 COD. 46



**Pattern**  
**Grey** 15,2x26,3  
22761 COD. 46



**Pattern**  
**Cream** 15,2x26,3  
22759 COD. 46



**Pattern Ash**  
**Blue** 15,2x26,3  
22762 COD. 46



**Pattern Mist**  
**Green** 15,2x26,3  
22763 COD. 46



**FORMATO / SIZE**  
15,2 x 26,3 cm. 6 1/2" x 11"

| Kg/pza | pzs | Kg    | m <sup>2</sup> | pzs   | Kg  | m <sup>2</sup> | cajas |
|--------|-----|-------|----------------|-------|-----|----------------|-------|
| 0,330  | 50  | 16,50 | 1,00           | 3.000 | 990 | 60             | 60    |

# Rhombus



5



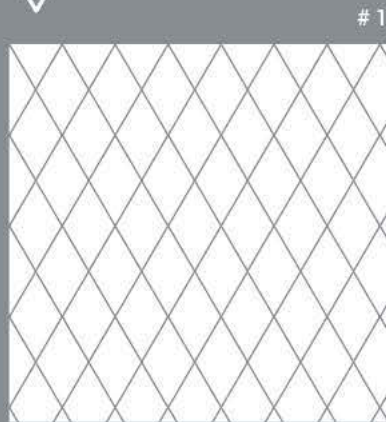
Rivestimento  
Wall tile

Pavimento  
Floor tile

Pasta Bianca  
White Body

Porcellanato  
Porcelain

MODULO A  
Module A



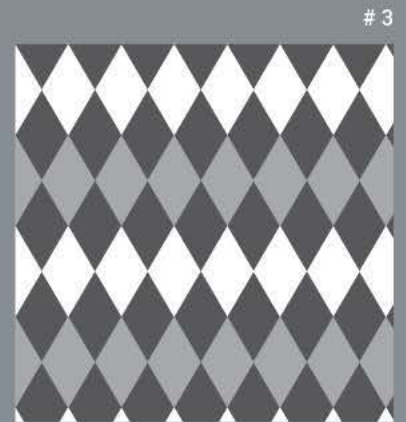
100 %

# 1



50 % 50 %

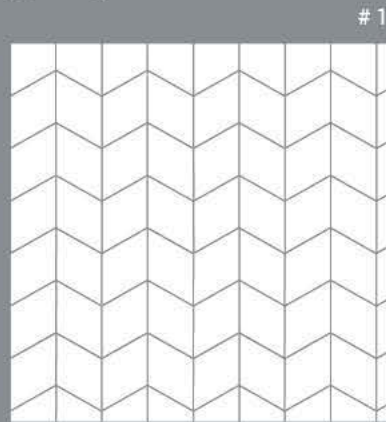
# 2



25 % 25 % 50 %

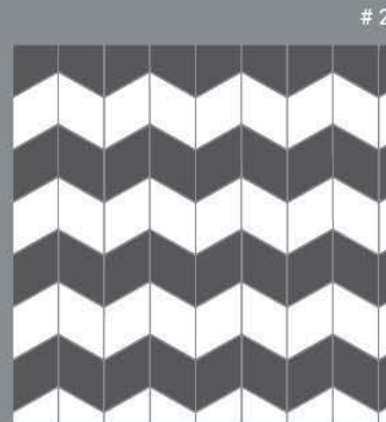
# 3

MODULO C  
Module C



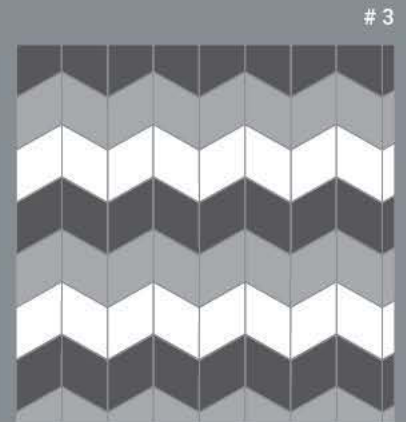
100 %

# 1



50 % 50 %

# 2



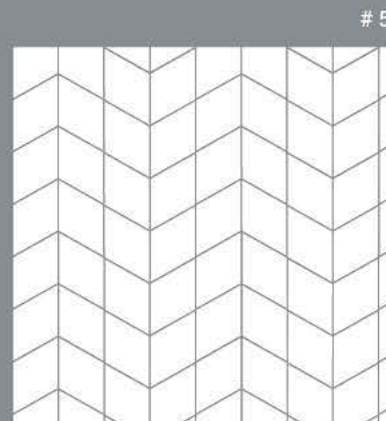
33,3 % 33,3 % 33,3 %

# 3



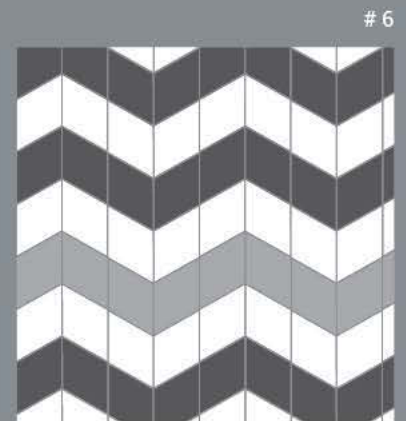
33,3 % 33,3 % 33,3 %

# 4



100 %

# 5



50 % 17 % 33 %

# 6

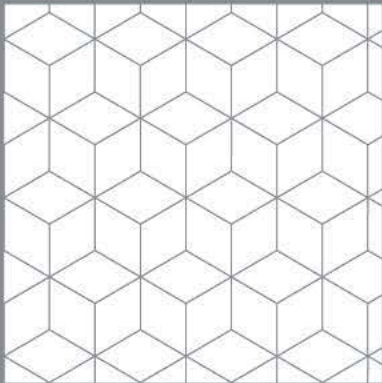
Proposte di posa  
Laying proposals



# MODULO B

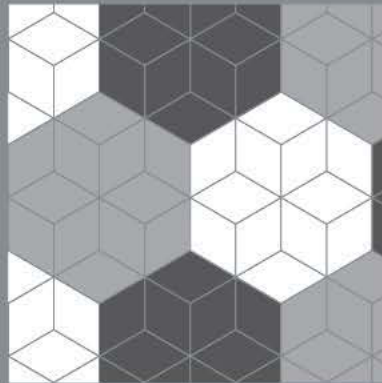
Module B

# 1



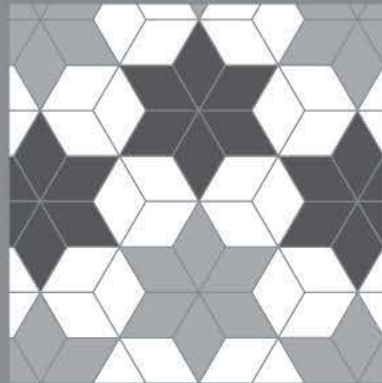
100 %

# 2



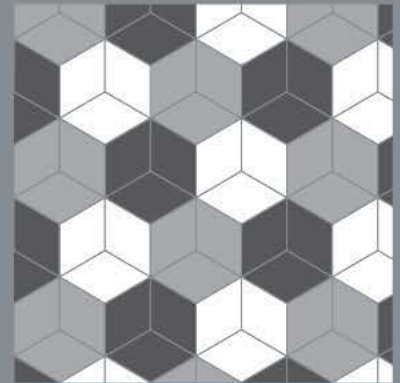
33,3 % 33,3 % 33,3 %

# 3



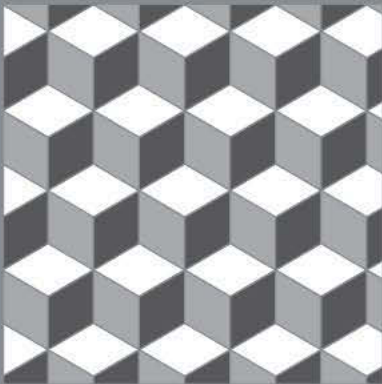
45 % 32 % 23 %

# 4



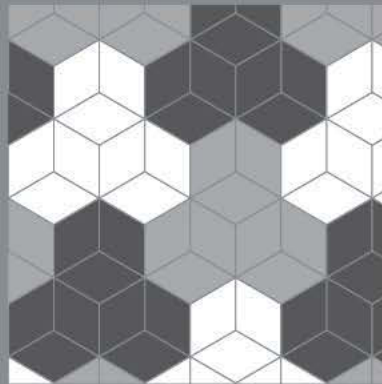
33,3 % 33,3 % 33,3 %

# 5



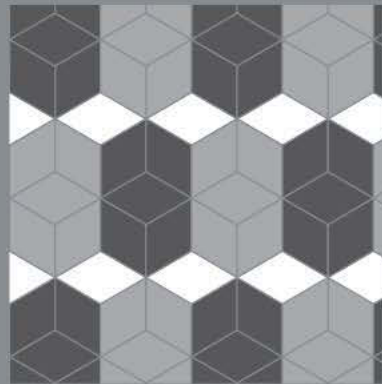
33,3 % 33,3 % 33,3 %

# 6



33,3 % 33,3 % 33,3 %

# 7



10 % 45 % 45 %

Le proposte di posa sono alcuni esempi delle molte combinazioni che si possono eseguire con i 9 colori disponibili. Le immagini elaborate in queste pagine corrispondono a 1 mq.

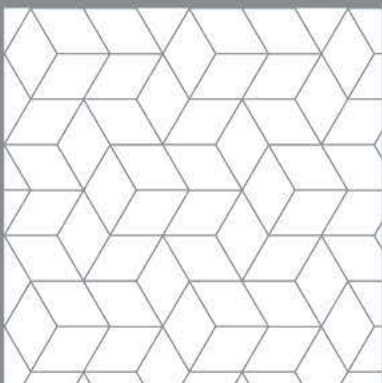
These laying proposals are examples of the many combinations that can be made with the 9 available colours. The percentage shown corresponds to 1 m<sup>2</sup>.



# MODULO D

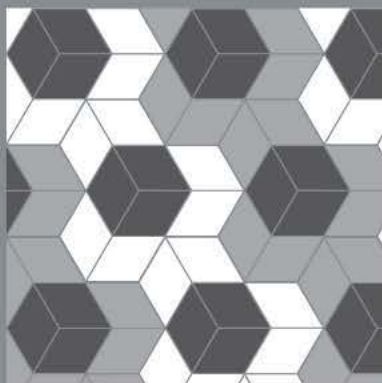
Module D

# 1



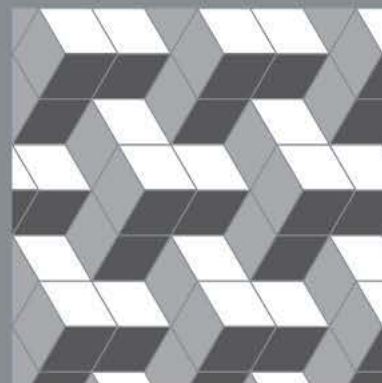
100 %

# 2



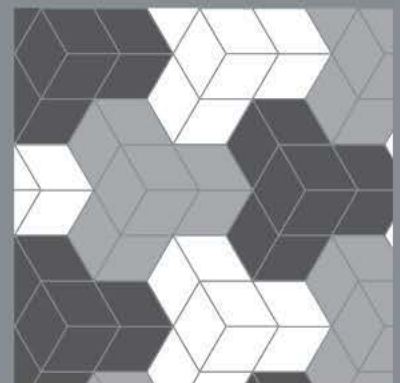
33,3 % 33,3 % 33,3 %

# 3



33,3 % 33,3 % 33,3 %

# 4



33,3 % 33,3 % 33,3 %